



City of Sarasota

# **TRAFFIC CALMING PLAN TOWN HALL**

Safe speeds, stronger neighborhoods

---

**FEBRUARY 19, 2025 | 5:30pm – 7:30pm**

City Commission Chambers (Room 101)  
1565 1st Street, Sarasota, FL

# MEET THE TEAM



Corinne Arriaga  
AICP

Project Manager  
City of Sarasota



Alvimarie Corales  
AICP

Deputy Project Manager  
City of Sarasota



Emma Long

Project Manager  
RK&K



Jason Lyle  
PE

Contract Manager  
RK&K

# TITLE VI

**This meeting is being conducted in accordance with the Civil Rights Act of 1964. Public participation is solicited without regard to race, color, national origin, age, sex, religion, disability or family status.**

To express concern(s) relative to the City's compliance with Title VI, please contact the City's Title VI Coordinator:



**Jake Brown, Title VI Coordinator**

941-263-6299 | [ADACoordinator@sarasotafl.gov](mailto:ADACoordinator@sarasotafl.gov)

A photograph of a residential street with a brick-paved median and asphalt road. Trees line both sides, and a house is visible on the left. Traffic signs include a diamond-shaped sign with two arrows pointing in opposite directions and a rectangular sign that says 'SHARE THE ROAD' with a bicycle symbol. The title 'TRAFFIC CALMING 101' is overlaid in the center.

# TRAFFIC CALMING 101

# INTRODUCTION

1990s

- Traffic Calming Program established
- Featured speed tables and humps

2000s

- Master plan developed
- Neighborhood prioritization process created

2010s

- Transportation Planning oversees program
- Program is streamlined

2020s

- Creates options for neighborhoods that don't qualify for speed studies
- Traffic Calming Plan created to unify existing program



# TRAFFIC CALMING 101

Traffic calming is a set of **roadway treatments** that can help **alter driver behavior** and **reduce the negative impacts** motorists can have on pedestrians and cyclists.

Traffic calming can help **reduce speed**, vehicle crashes, and **increase pedestrian and bicyclist usage**.





# TRAFFIC CALMING 101



Horizontal Deflections



Vertical Deflections



# TRAFFIC CALMING 101



Street Width Reduction



Routing Restrictions



# TRAFFIC CALMING 101

## MYTH BUSTERS

Traffic Control

Sidewalks

Volume

Efficiency



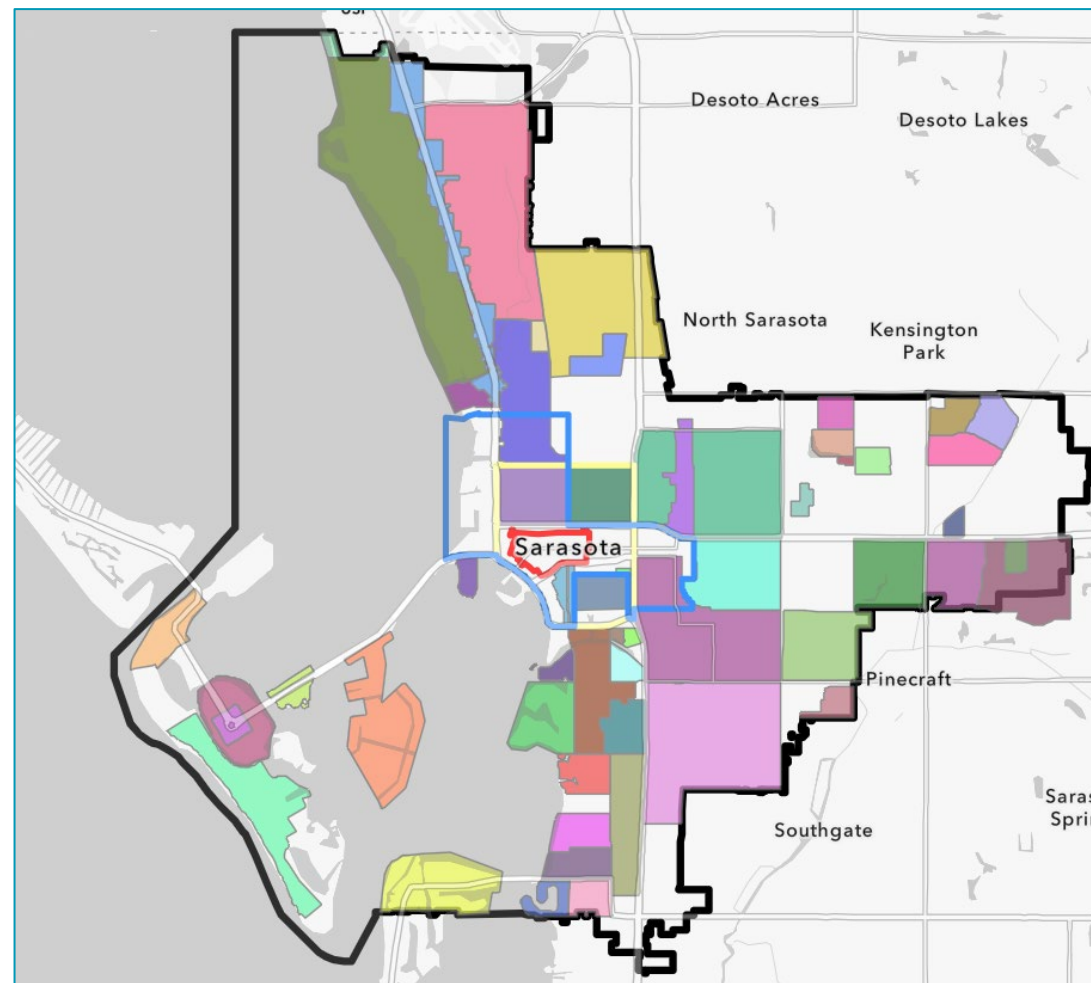
The background image shows a residential street scene. On the left, there is a yellow diamond-shaped sign with a black arrow pointing down and a black arrow pointing up. On the right, there is a yellow diamond-shaped sign with a black bicycle icon and a rectangular sign below it that says "SHARE THE ROAD". The street is paved with asphalt and has a brick-paved area in the foreground. There are trees and houses in the background.

# **TRAFFIC CALMING PLAN OVERVIEW**



# PROJECT VISION

**Work together** with residents to design slower streets, improve neighborhood **livability**, and **take action** where **speeding** is a problem.





# PROJECT OVERVIEW

## Goal

The **Traffic Calming Plan** (TCP) is a City-wide initiative dedicated to unifying the existing Traffic Calming program and evaluating areas of community concern for potential traffic calming solutions.

## Key Features

- Neighborhood and public engagement to inform new TCP
- Create prioritization for areas of concern
- Identify potential treatment options



# DATA COLLECTION + ANALYSIS

## PHASE 1

- Citywide Speed Study
- High Pedestrian Zones

## PHASE 2

- Citywide Traffic Calming Evaluation

## PHASE 3

- Neighborhood Plans
- Project Prioritization

### Key Data Sources

- StreetLight Analytics
  - 85th Percentile Speeds
  - 2023 Annual Average Daily Traffic (AADT)
  - High Pedestrian Zones
- Up to 100 sites for data validation (TBD)
- Community Survey
- Signal4 Analytics (Crash Data)

# OUTCOMES

## PHASE 1



- Potential Speed Limit Changes (Code Changes)
  - Requires two public hearings

## PHASE 2



- Evaluation Matrices for Collector and Arterial Roads

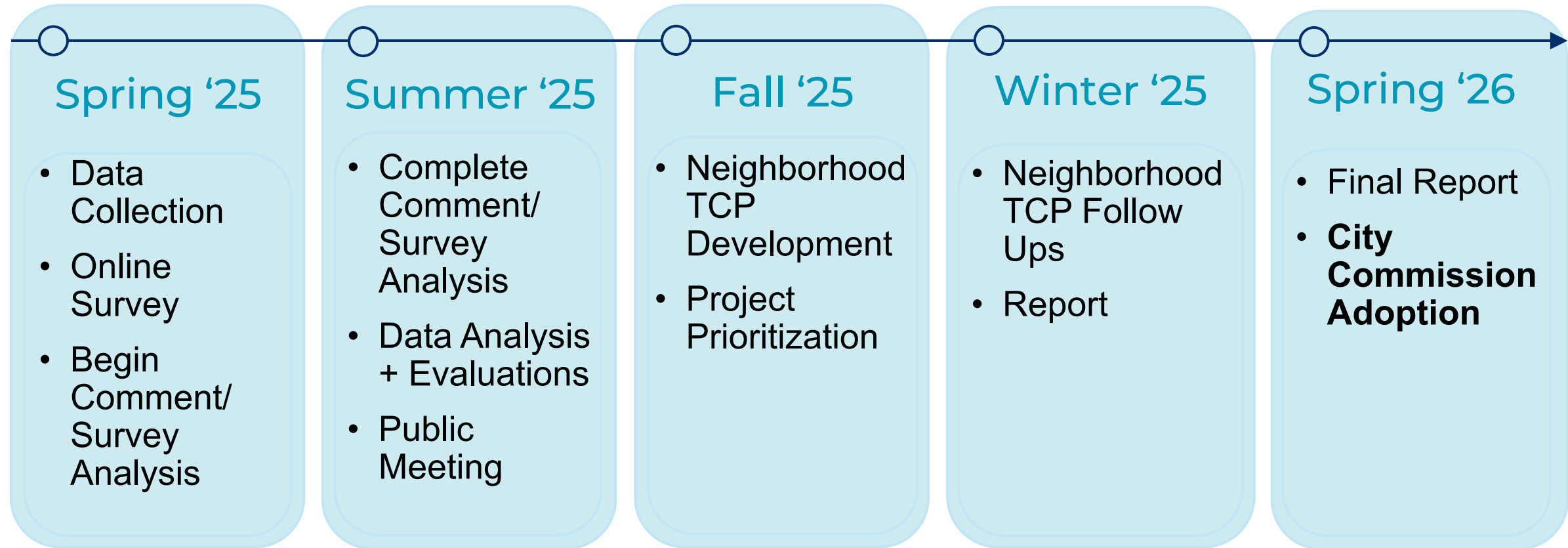
## PHASE 3



- Neighborhood Plans
- Implementation Strategy
- Final Report/Plan



# PROJECT SCHEDULE



← **NEIGHBORHOOD OUTREACH** →

# PUBLIC ENGAGEMENT

Your input will be critical to identify areas of concern and potential treatments.

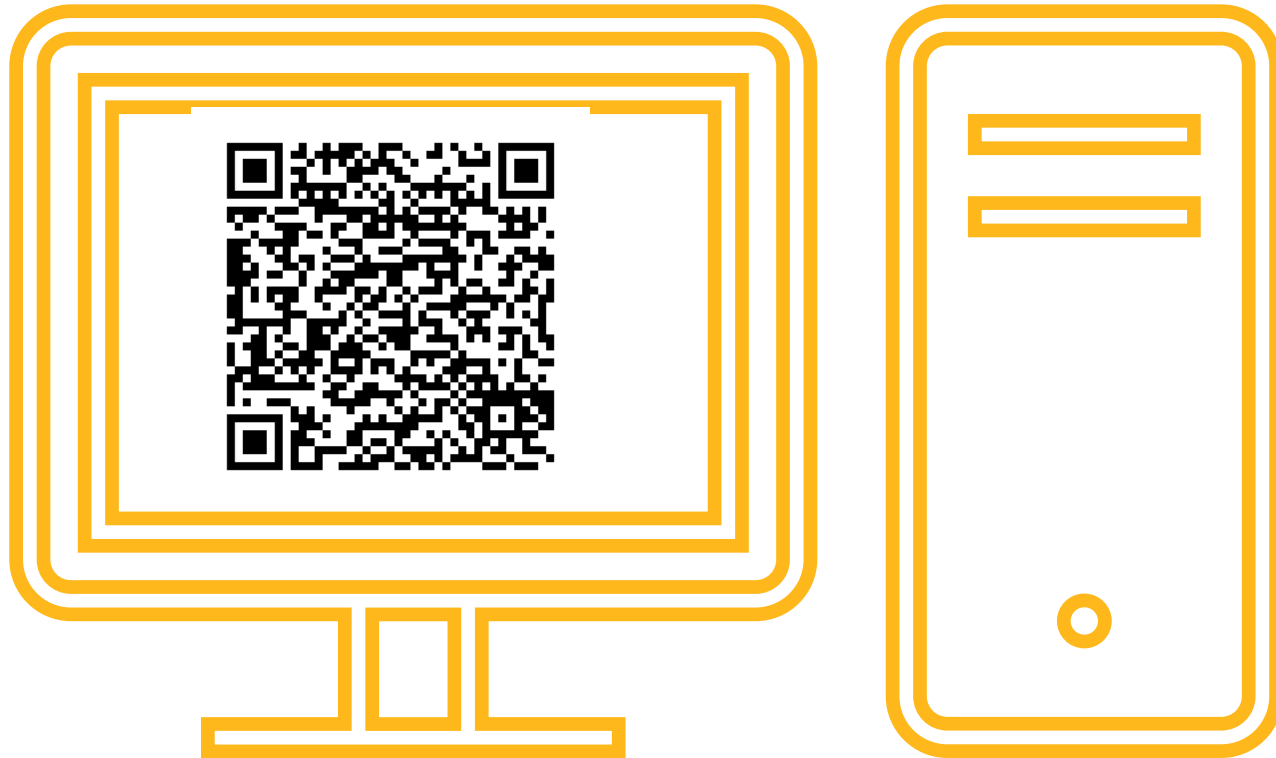
**We want to hear from you!**

There will be several opportunities to share your feedback throughout the project including:

- Public meetings
- Online survey
- Neighborhood meetings



# TAKE THE SURVEY!



Your input will be critical to identify areas of concern and potential treatments.

**We want to hear from you!**



# CONTACT

## PROJECT MANAGER

Corinne Arriaga, AICP, CPH

City Project Manager

[TransPlan@SarasotaFL.gov](mailto:TransPlan@SarasotaFL.gov)

941-263-6362

## BY MAIL

Corinne Arriaga

Transportation Planning

1761 12<sup>th</sup> Street

Sarasota, FL 34326

Keep in touch! Visit our project website at:

[www.SarasotaFL.gov/TrafficCalmingPlan](http://www.SarasotaFL.gov/TrafficCalmingPlan)



# **PUBLIC FORUM**



# PUBLIC COMMENT PERIOD

- Fill out speaker request card
- Come to the microphone when called
- State your name and affiliation, if applicable
- Provide your comment (**2-minute limit**)

The image shows a 'CITY OF SARASOTA TRAFFIC CALMING PLAN SPEAKER REQUEST CARD'. The card has fields for Name, Address, City, Phone, State, Zip, and Email. A red circle is drawn around the 'Neighborhood/Street of Concern' field. Below this field is a note: 'Note: Please limit comments to two minutes to allow time for all participants to speak.' At the bottom of the card, there is a disclaimer: 'Public Participation is solicited without regard to race, color, national origin, age, sex, religion, disability, or family status. Persons with disabilities requesting an accommodation under the ADA should contact the City ADA Coordinator, Jake Brown, at least two business days prior to official city meetings by calling 941-263-6299 or [ADACoordinator@sarasotafl.gov](mailto:ADACoordinator@sarasotafl.gov).' The card is numbered '1' in the bottom right corner.

Please note, there is a place to write the neighborhood/area of your concern on the speaker request card.





**THANK YOU FOR YOUR  
PARTICIPATION!**

*Safe speeds, stronger neighborhoods*